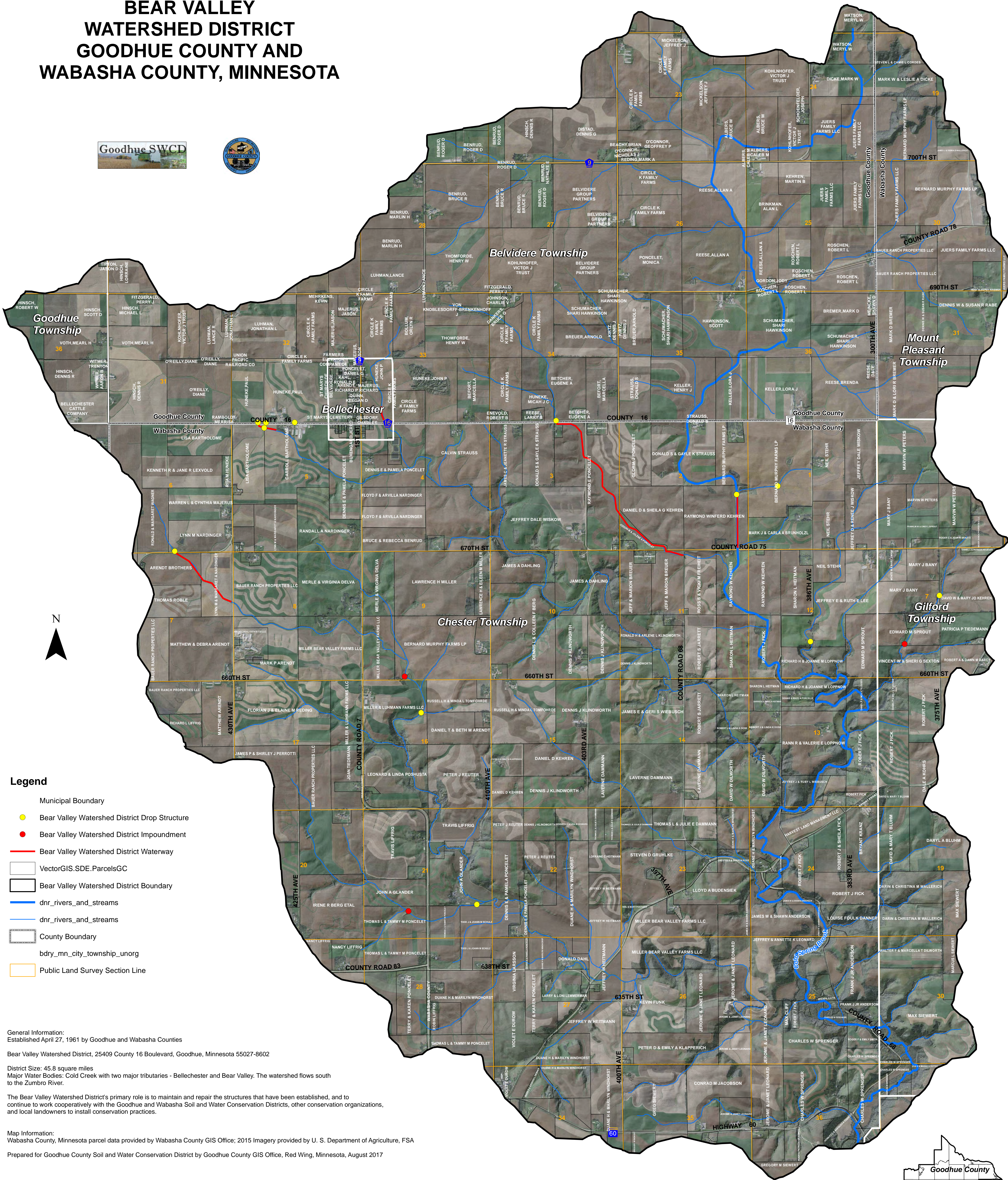


BEAR VALLEY
WATERSHED DISTRICT
GOODHUE COUNTY AND
WABASHA COUNTY, MINNESOTA



- Legend**
- Municipal Boundary
 - Bear Valley Watershed District Drop Structure
 - Bear Valley Watershed District Impoundment
 - Bear Valley Watershed District Waterway
 - VectorGIS.SDE.ParcelsGC
 - Bear Valley Watershed District Boundary
 - dnr_rivers_and_streams
 - dnr_rivers_and_streams
 - County Boundary
 - bdry_mn_city_township_unorg
 - Public Land Survey Section Line

General Information:
Established April 27, 1961 by Goodhue and Wabasha Counties
Bear Valley Watershed District, 25409 County 16 Boulevard, Goodhue, Minnesota 55027-8602

District Size: 45.8 square miles
Major Water Bodies: Cold Creek with two major tributaries - Bellecheester and Bear Valley. The watershed flows south to the Zumbro River.

The Bear Valley Watershed District's primary role is to maintain and repair the structures that have been established, and to continue to work cooperatively with the Goodhue and Wabasha Soil and Water Conservation Districts, other conservation organizations, and local landowners to install conservation practices.

Map Information:
Wabasha County, Minnesota parcel data provided by Wabasha County GIS Office; 2015 Imagery provided by U. S. Department of Agriculture, FSA
Prepared for Goodhue County Soil and Water Conservation District by Goodhue County GIS Office, Red Wing, Minnesota, August 2017

DATA DISCLAIMER:
Goodhue County assumes NO liability for the accuracy or completeness of this map OR responsibility for any associated direct, indirect, or consequential damages that may result from its use or misuse. Goodhue County Copyright 2017

